

We are now building the fundamental documents to define how the Assembly should be elected and how it should organize itself to fulfill its role, involving also the partner Universities and all the 250.000 students in UNITA

The Student Assembly is a specific participative consultative body, where students have a core role in the overall steering of the project, strategic decision-making, budget decisions and any kind of proposal.



Climb your future!

ELECTORAL REGULATION

Electoral process, mandate duration and duties, eligible voters and right to stand, Electoral system and methods, list presentation process, incompatibilities and privacy

INTERNAL FUNCTIONING REGULATION

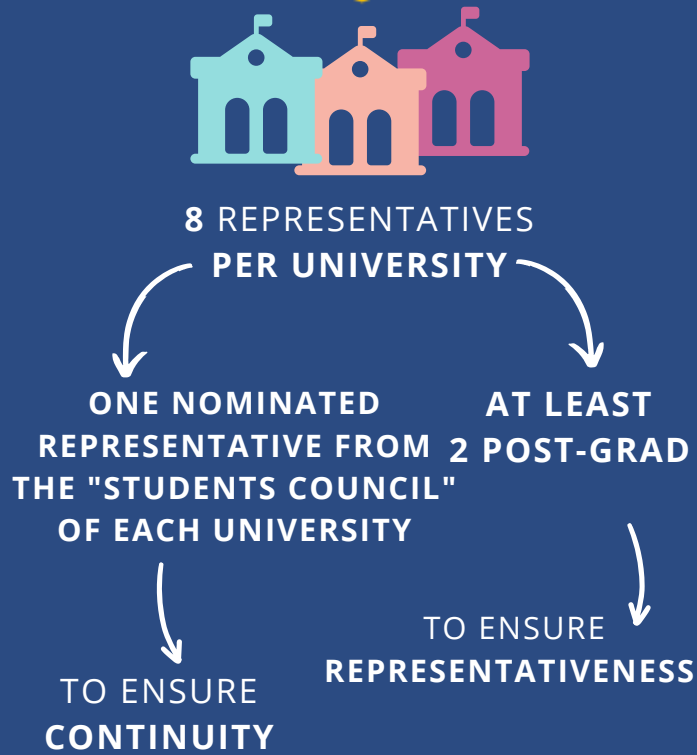
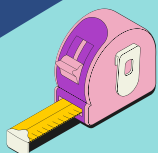
Constitution, values, objectives, functioning, roles, duties, meeting and voting criteria, internal commissions



- TRANSPARENCY
- RIGHTS
- DEMOCRACY
- INCLUSION
- PRIVACY



INTEGRATION BETWEEN PROCESSES AND INSTITUTIONS, CROSS-CUTTING AND ADAPTABLE



UNITA STUDENT ASSEMBLY

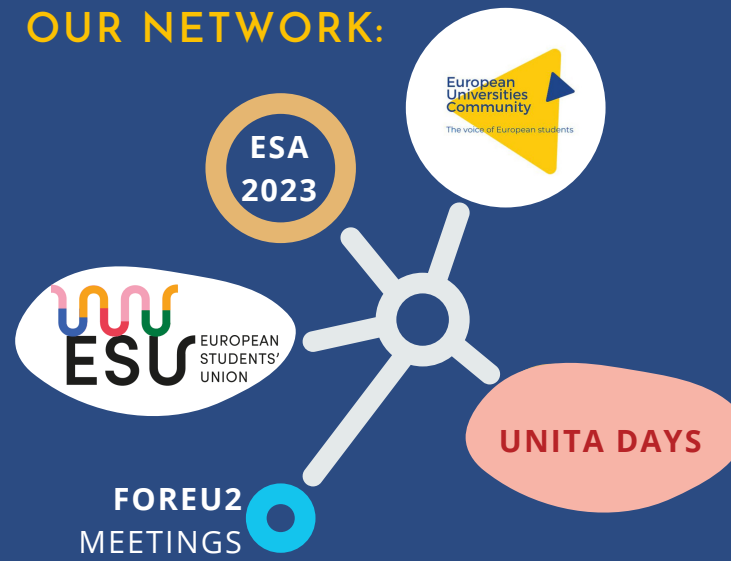
250.000
students
VOTE TO ELECT
80
members





Climb your future!

OUR NETWORK:



OUR COMMISSIONS:

ORIENTATION, STUDENT SERVICES AND PLACEMENT

TRANSPARENCY AND ELECTIONS

SCAN ME



OUR INITIATIVES:

EDUCATION

PHD

EU CITIZENSHIP

UNITA CUP

**INTERNATIONAL STUDENT ART AND CULTURE FESTIVAL
TIMIȘOARA - 32° EDITION**

MEU MODEL EU

ME&U TO CLEAN EU LITTERING COMPETITION